



schenckprocess



FulFiller – Container Loading Systems

For quickly loading granular or pellet products into standard ISO containers at rates up to 8,475 cubic feet (240 cubic meters) per hour, the Schenck Process FulFiller container loading system is the ideal solution. Three different models are available to meet your specific application needs: the Mobile Forklift Frame (MFF), Customer Fixed Frame (CFF), and Dedicated Mobile Frame (DMF).

MOBILE FORKLIFT FRAME (MFF)

The MFF is used when customers require maximum flexibility in operation as the unit is designed to be moved by forklift. This allows the FulFiller to be hung on the rear of the container to be loaded before the container is moved under the loading silo or hopper.

CUSTOMER FIXED FRAME (CFF)

The CFF is designed for dedicated silos that are always used for out loading materials into containers. Loading begins after the container trailer is reversed to the FulFiller and the necessary connections are made.

DEDICATED MOBILE FRAME (DMF)

The DMF is designed for flexible loading operations. After being positioned under the required silo, the container trailer is reversed into position, connections are made, and the loading begins.

NOTE:

CFF and DMF models can accommodate variable container trailer heights with an optional lift for adjusting the thrower height. Misalignment of the container and the FulFiller can be prevented by the use of an optional turntable.

MODEL DESIGN:

All three models of the FulFiller come equipped with a belt thrower assembly comprising drive, main pulleys and idlers, throwing belt, inlet hopper and product baffle, outlet section, and liner inflation fan. Product contact

parts are supplied in stainless steel or food grade rubber. Non-contact parts are painted carbon steel.

CONTROL SYSTEM:

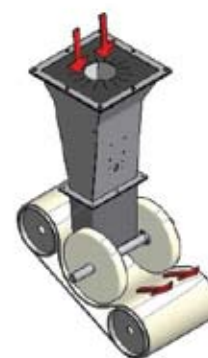
The main panel of the control system contains all the necessary power and control circuits along with a Siemens PLC three phase power socket for ancillary equipment. A fitted 32.8 ft (10 m) cable and plug allows power connection to a local three phase supply.

FRAME:

A heavy-duty carbon steel painted frame comes complete with access platform and railing. The DMF model also includes a wheeled chassis designed to match your required height.

OPERATING PRINCIPLE:

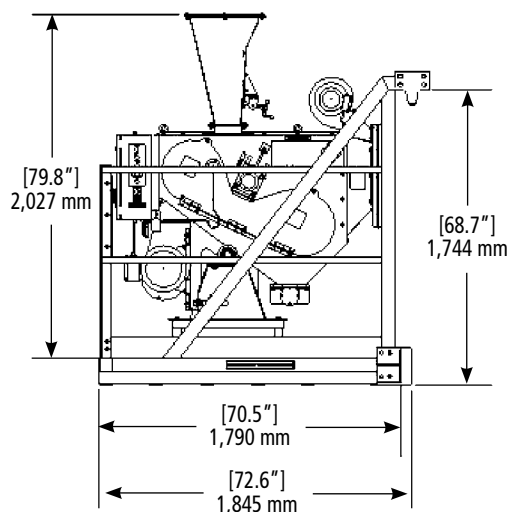
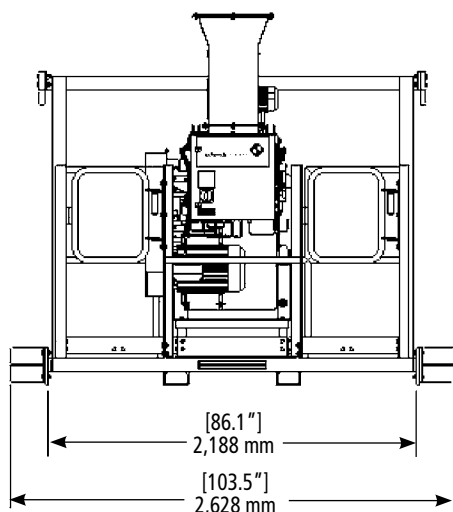
The FulFiller uses a throwing belt that is supported on two rollers and rotates at a high speed. Materials being loaded fall on to the belt below and are accelerated at a 90° angle and thrown from the loader into the container. The throwing action does not damage the material and is therefore ideal for all pellets and granules.



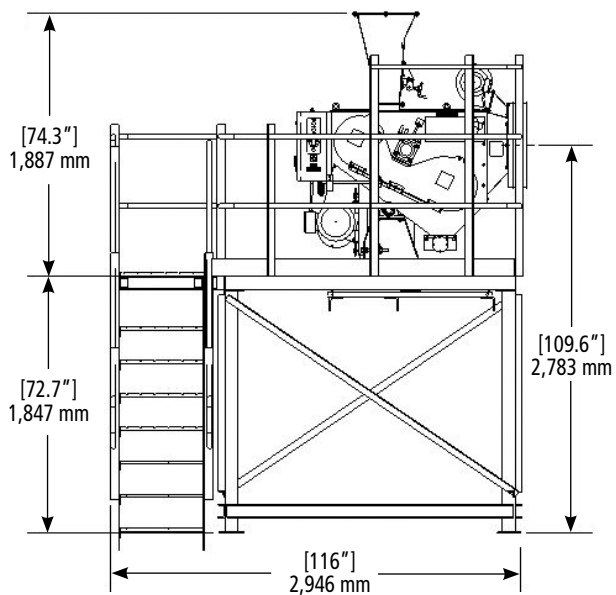
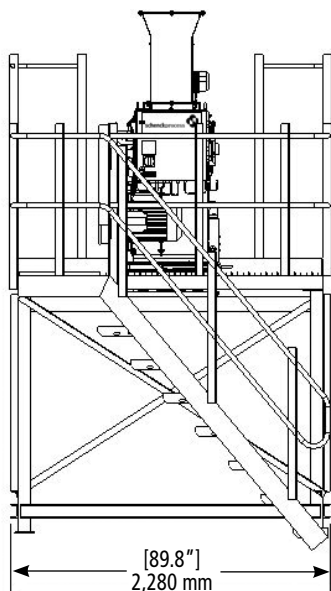
**For more information, please contact us at 262-473-2441 or Fax: 262-473-6884
E-mail: mktg@schenckamericas.com Web site: www.schenckamericas.com**

©2008 Schenck Process FulFiller (6/08)

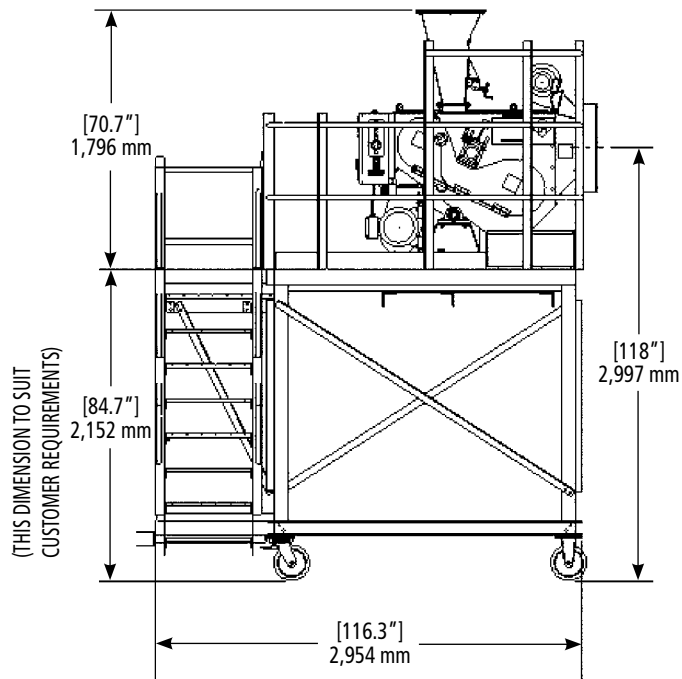
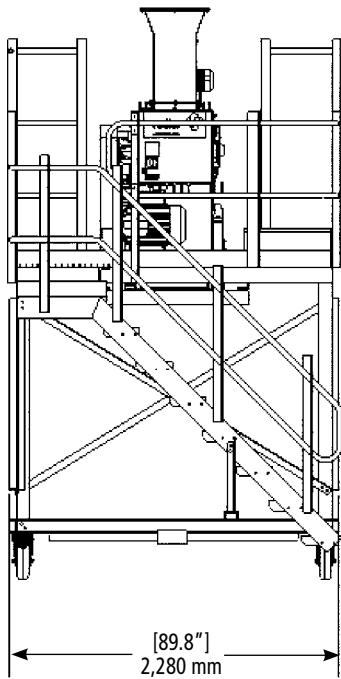
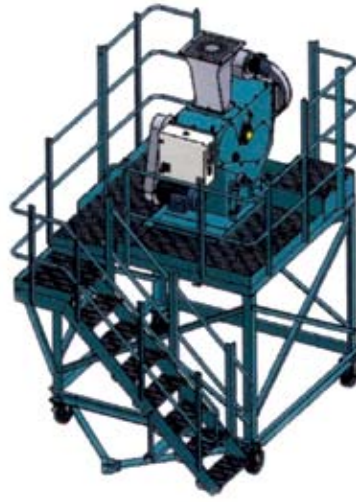
MOBILE FORKLIFT FRAME (MFF) MODEL DIMENSIONS



CUSTOMER FIXED FRAME (CFF) MODEL DIMENSIONS

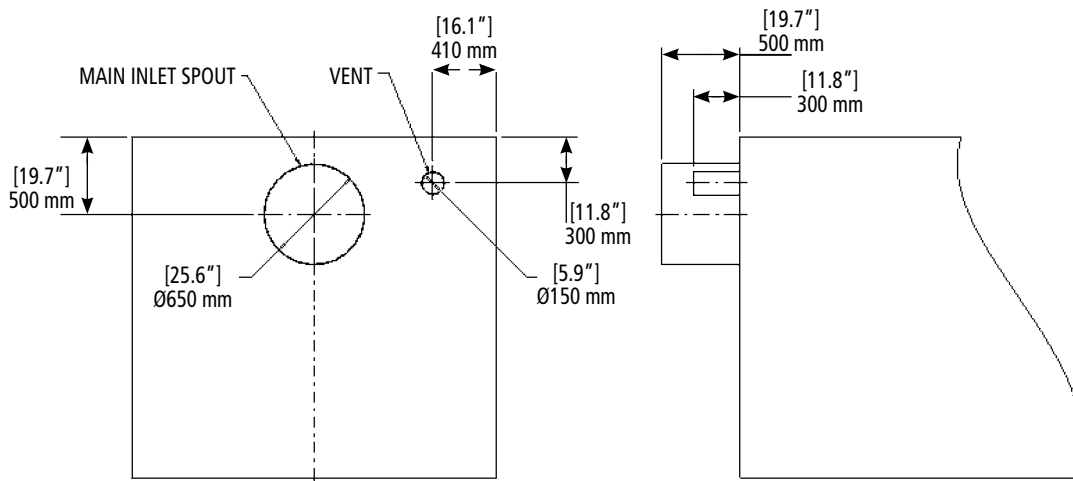


DEDICATED MOBILE FRAME (DMF) MODEL DIMENSIONS



CONTAINER LINER INFORMATION

For containers using liners, the design should use the following dimensions.



OUTLETS TO SUIT
CUSTOMER REQUIREMENTS

TECHNICAL DATA

Maximum loading rate	8,475 cubic feet (240 cubic meters) per hour dependent upon material and physical arrangement
Main drive motor	11 kW ATEX Zone 22
Control	Via Siemens PLC
Operating conditions	32° - 113° F (0° - 45° C) ambient
Weight	2,513 lbs. (1,140 kg)
Electrical requirements	460V, 3 phase, 50/60 Hz Unit supplied with cable and plug.

OPTIONS FOR THE CFF AND DMF MODELS

Hydraulic lift	Hydraulic lift table to allow adjustment of the thrower height to suit varying trailer/container configurations. Power is supplied from the standard control panel.
Turntable	A rotating turntable allows adjustment of the throwing direction when the container and FulFiller are not ideally positioned.

PRODUCT SUITABILITY

Most granular or pellet products can be loaded using the FulFiller depending on particle size and material density. Particles ideally should be uniform and ranging in the sizes of .04 to .98 inches (1 – 25 mm). Bulk density of the product should lie within the range 25 - 75 lbs/ft³ (400 – 1,200 kg/m³). Very dusty products will not load satisfactorily.

Typical products are plastic pellets, refined sugar, grains, soybeans, animal meal (pellets), wood chips/pellets, rice, and clay pellets.

SPECIAL REQUIREMENTS

For special requirements, the FulFiller can be adjusted to meet your specific needs. Please contact us to discuss applications where the standard product may not be suitable.

Schenck Process

746 E. Milwaukee Street
Whitewater, WI 53190
262-473-2441 or Fax: 262-473-6884
E-mail: mktg@schenckamericas.com
Web site: www.schenckamericas.com

schenckprocess



we make processes work