

news

Neues von **SCHENCK PROCESS**

Heavy Industry 09.2005 GB

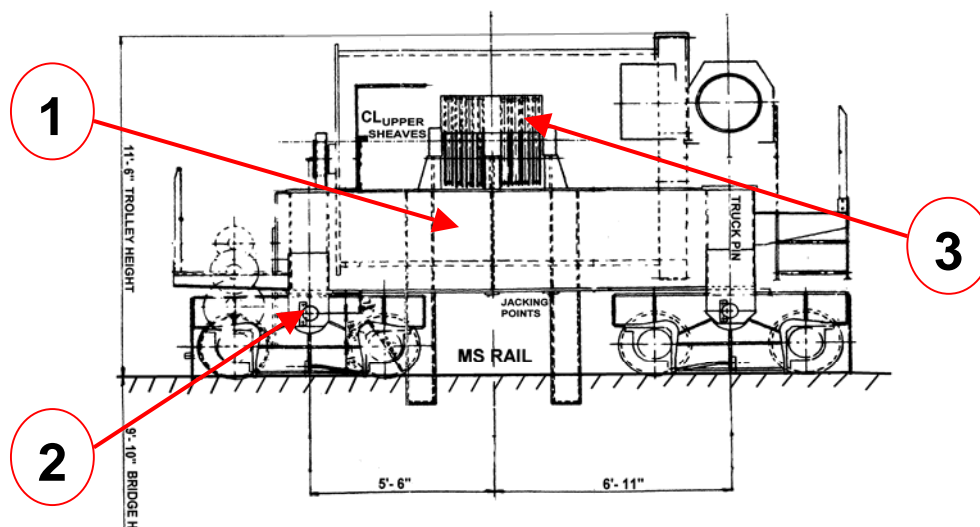
SCHENCK Weighing Systems for teeming and ladle transfer cranes: Installation solutions inside the crane trolley

The heavy cranes carrying ladles filled with pig iron or liquid steel represent the most important transport device in every steel plant. As these cranes transfer the ladles to different locations of the steel making process, the installation of an weighing system inside leads to essential benefit for the entire mass totalling and production data acquisition and control.

In this NEWS we like to present to You the different principal installation places for crane weighing solutions **inside the crane trolley**. Integrating scales there is characterised by the following advantages, compared to the second principally suited location for crane weighing systems, the spreader beam scales:

- no problems with the fixed mounted cable passages
- reduced dynamic load and temperature charges

In order to define the different installation places for our Weighing Systems please have a look below at the typical drawing of the trolley of a heavy load teeming or ladle transfer crane:



At the next page we will present to You the following installation locations for weighing systems and their different features based on the drawings of executed systems:

- 1 Double frame weighing**
- 2 Wheel base platform weighing**
- 3 Upper sheave block weighing**

