



S40 MULTICOR PRODUCT SPECIFICATION SHEET



APPLICATIONS: Primarily designed for measuring high capacity, free to moderate flowing dry materials.

FEEDRATES: Up to 40 m³/hr (1400 ft³/hr) standard; 20 metric tons per hour. Higher capacities available.

FEEDER ACCURACY: +/- .5% accuracy available when metering over 2 metric tons per hour. Actual accuracies and repeatability is subject to application parameters and material characteristics.

MATERIAL CHARACTERISTICS: Free or moderate flowing, fluidized, but not adhesive or sticky.

- Particle size: Minimum: 90% > 90 microns
Maximum: 5mm (.197 in.)
- Moisture: Maximum allowable of 1%.
- Bulk Density: 0.3 - 3 kg/l (18 - 188 lb/ft³)

TEMPERATURE LIMITS: Maximum material temperature is 130 degrees C (266 degrees F).

MATERIAL OF CONSTRUCTION: Product contact parts in stainless steel 1.4404 (AISI SS 316 L). Non-contact surfaces are low carbon steel (motor enclosure).

HOUSING:

- Operating Pressure: -2 to 20 mbar
- Design Pressure: -25 to 100 mbar
- Allowable Pressure Variation Infeed to Discharge: +/- 5 mbar
- Ambient Temperature: -30 to 50 degrees C (-22 to 122 degrees F)
- Weight: Approximately 180 kg (397 lbs).

MOTOR: Directly coupled to drive shaft of rotor utilizing an Inline reducer. Designed for reduced vibration for accurate measurements and longer bearing life. Motor speed monitored by Namur speed sensor for mass flow calculations.

- Power: 50 Hz: 1.1 kW (1.5 hp)
60 Hz: 1.3 kW (1.75 hp)
- Voltage: 230/400V 50Hz AC
230/440V 60Hz AC
- Protection Class(IEC): IP55
- Insulation Class: F
- Exterior Coating: Hard Coat Epoxy
- Gear Reducer: None
- Speed Sensor Pulses/Rev: 15

ROTOR: Special designed vanes to maximize material flow rate through rotor. Computer balanced, using the same technology SCHENCK applies when balancing turbines, for weighing accuracy and extend bearing life.

- Number of Vanes: 16
- Max. Material Lump Size: 5 mm (0.147 in)
- Joints: Vacuum brazed to minimize distortion.
- Material: Stainless Steel.
- Options:
 - Wear resistant coating-Chromium Carbide for very abrasive materials.
 - "Open Top"- to reduce stringy material build up on vanes.

ROTOR SPEED: 50 Hz: 750 RPM
60 Hz: 900 RPM

WHEEL RADIUS: 167.5 mm (6.6 in)

LOAD CELL:

- Capacity for feedrates: **.5-10 t/h: 30 kg**
10-20 t/h: 60 kg
- Single Point design load cell
- Stainless steel
- Protection class: IP65
- Direct Loading on load cell, not through springs or flexures.
- Output: 2 mV/V

CONNECTIONS:

- Inlet: Bolted Flanged
- Outlet: Flex connector

OPTIONS:

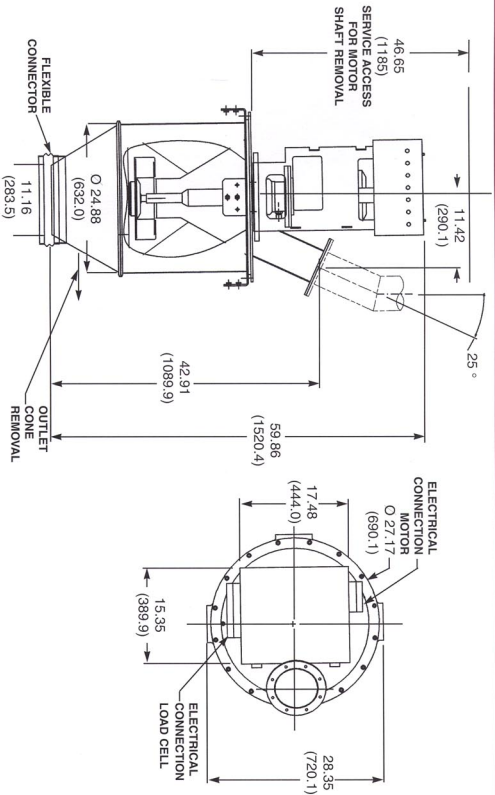
- Hard Coat Rotor: Chromium Carbide coating to improve wear resistance for abrasive materials.
- Sound Insulation: Rubber lined internal cone and external insulation wrap to reduce noise. For typical hard plastic pellet applications noise at levels below 85 dB at capacity feedrates can be achieved.
- Nitrogen Infeed: Fittings to allow supply of nitrogen for controlled environments.
- Bottom Cone Gasket: Seals the inner cone to the housing.
- Rubber Lined Inner Cone: Reduces the degradation of friable material or to improve wear life of the inner cone.

**For more information,
please call the
SCHENCK Weighing Systems,
Sales Department at:
(800) 558-0184
Fax: (262) 473-2232
www.schenckamericas.com**

S40COR (2/98)

S40 MULTICOR

PRODUCT SPECIFICATION



S40 MULTICOR

PRODUCT SPECIFICATION