



SOLIDSFLOW® MODEL 2000 FEEDER



The SolidsFlow® Model 2000 is a mass flow feeder based on louvered vibratory feeding technology.

The feeder utilizes a vibrating drive and tray frame, which contains a removable feed tray. The feed tray is fitted with a number of slats of varying lengths set at an angle and a predetermined distance apart. This effectively divides the discharge area into a series of material feed slots.

Each slat acts as a vibratory feeder with a gap and overlap across the entire width of the discharge opening. All slat dimensions and angles are designed to suit the particular physical characteristics of each material being fed, therefore when the vibrations cease, material flow stops due to changes in the vibrated and static angle of repose of the product.

To insure proper feeder size and mass flow for your specific application, SCHENCK AccuRate® utilizes a Jenike & Johanson shear tester. The shear tester is the standard device used in Europe and the United States to evaluate flow properties of bulk solids. By evaluating your material with the shear tester we can recommend which feeder and hopper design will best fit your processing needs.

Users of the SolidsFlow® Model 2000 find it to be a low maintenance, easy to clean feeder, that handles a wide variety of materials whose flow characteristics may differ. With no moving parts in the feeder, minimal spare parts and maintenance are required. Available in volumetric and gravimetric models, the trademark of the feeder is its ability to feed wet chopped fiberglass, abrasives, and friable (easily damaged) materials.

FEATURES & BENEFITS:

- No moving parts.
- Easy to clean.
- Few spare parts.
- Low maintenance.
- With no moving parts, accident risk is reduced.
- Instantaneous cut-off of flow rate.
- Can feed abrasive materials.
- Can feed various sized particles.
- Tray is vibrated at 3600 cycles/min. (60 Hz), therefore a very uniform, non-pulsating material discharge. Excellent short-term sampling accuracy.
- Large flow rate turndown ratio. Excellent for batching applications.
- No material degradation.
- Natural mass flow feeding device. No material segregation.
- No flow promoting device required.
- Special finishes/coatings available.

SOME OF THE UNIQUE MATERIALS FED BY THE MODEL 2000 INCLUDE:

- Fumed Silica
- Micro Balloons
- Breakfast Cereals
- Dry Marshmallows
- Toner/Carbon Black
- TNT Flakes
- Recycled Tobacco
- Ground Copper Wire
- Sliced Almonds
- Wet Ground Jalapeno Peppers
- Glitter Flakes
- Glass Cullet
- Dry & Wet Chopped Fiberglass up to 2" in length
- Carbon Fibers
- Heavy Metals

For more information, please contact us at 1-800-558-0184 or Fax: 262-473-4384

E-mail: mktg@accuratefeeders.com Web site: www.accuratefeeders.com

SOLIDSFLOW® MODEL 2000 FEEDER SPECIFICATIONS

VIBRATOR

Standard electromechanical for all sizes 230/460 V (CSA, CE)
Electromagnetic 115/230 V also available in 6" and 12"
feeder sizes.

MOUNTING KIT

Standard for all sizes.
Includes hopper to feed tray flex connector, (2) flat band clamps,
(3) hanger assemblies, and vibrator mounting hardware.

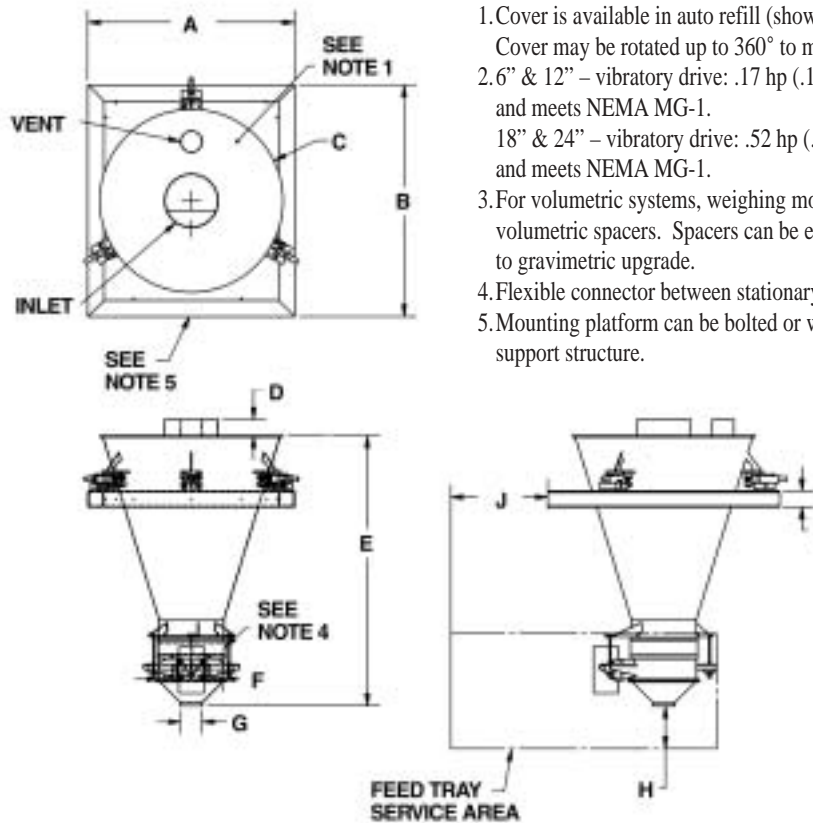
EXTENSION HOPPER AND COVER

Choices include no cover, blank cover, manual refill cover, and
covers with inlets & vents.

STANDS AND PLATFORMS

Stands and platforms are available in enamel-coated carbon steel
in the 6", 12", 18", and 24" feeder models.

- 12" adjustable riser
- 24" adjustable riser
- 36" adjustable riser



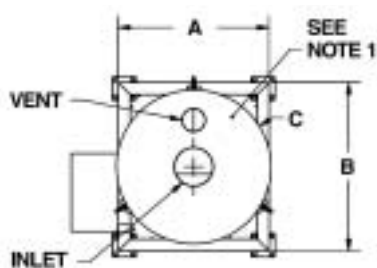
NOTES:

- Cover is available in auto refill (shown), manual refill or with no cover.
Cover may be rotated up to 360° to meet application requirements.
- 6" & 12" – vibratory drive: .17 hp (.13 kW). Drive is TENV, IP-66,
and meets NEMA MG-1.
18" & 24" – vibratory drive: .52 hp (.39 kW). Drive is TENV, IP-66,
and meets NEMA MG-1.
- For volumetric systems, weighing modules are replaced by
volumetric spacers. Spacers can be easily replaced for volumetric
to gravimetric upgrade.
- Flexible connector between stationary hopper and feed tray.
- Mounting platform can be bolted or welded into customer
support structure.

2000 Series Dimensions with Platforms

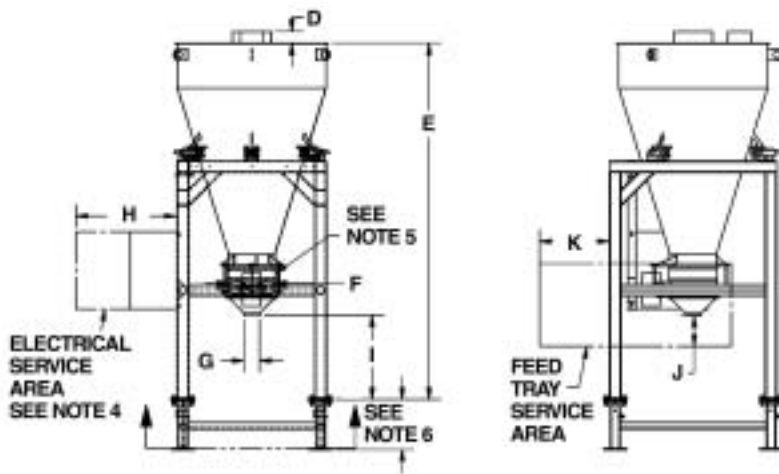
	6" 1 cu/ft hopper	6" 2.5 cu/ft hopper	12" 5 cu/ft hopper	12" 10 cu/ft hopper	12" 20 cu/ft hopper	18" 5 cu/ft hopper	18" 10 cu/ft hopper	18" 20 cu/ft hopper	24" 10 cu/ft hopper	24" 20 cu/ft hopper	24" 50 cu/ft hopper
A	22.00"	22.00"	38.50"	38.50"	38.50"	38.50"	38.50"	38.50"	38.50"	38.50"	38.50"
B	24.50"	24.50"	43.18"	43.18"	43.18"	43.18"	43.18"	43.18"	43.18"	43.18"	43.18"
C	Ø18.94	Ø26.65	Ø34.09	Ø39.50	Ø39.50	Ø34.09	Ø39.50	Ø39.50	Ø39.50	Ø47.00	Ø47.00
D	3.00"	3.00"	3.00"	3.00"	3.00"	3.00"	3.00"	3.00"	3.00"	3.00"	3.00"
E	26.81"	39.31"	50.36"	59.09"	70.60"	43.73"	52.76"	64.27"	45.88"	57.89"	89.89"
F	Ø6.38	Ø6.38	Ø12.00	Ø12.00	Ø12.00	Ø18.00	Ø18.00	Ø18.00	Ø24.00	Ø24.00	Ø24.00
G	Ø3.00	Ø3.00	Ø4.00	Ø4.00	Ø4.00	Ø4.00	Ø6.00	Ø6.00	Ø8.00	Ø8.00	Ø8.00
H	4.00"	4.00"	8.00"	8.00"	8.00"	12.00"	12.00"	12.00"	12.00"	12.00"	12.00"
I	2.00"	2.00"	3.00"	3.00"	3.00"	3.00"	3.00"	3.00"	3.00"	3.00"	3.00"
J	9.00"	9.00"	18.00"	18.00"	18.00"	24.00"	24.00"	24.00"	36.00"	36.00"	36.00"

Reference drawings only. Dimensions subject to change without notice. Please contact sales for detailed drawings.



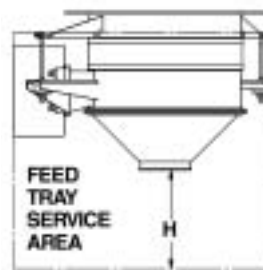
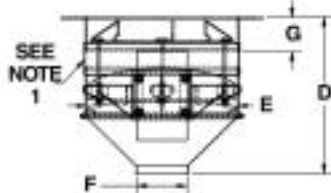
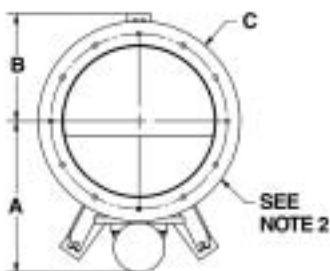
NOTES:

- Cover is available in auto refill (shown), manual refill or with no cover. Cover may be rotated up to 360° to meet application requirements.
- 6" & 12" – vibratory drive: .17 hp (.13 kW). Drive is TENV, IP-66, and meets NEMA MG-1.
18" & 24" – vibratory drive: .52 hp (.39 kW). Drive is TENV, IP-66, and meets NEMA MG-1.
- For volumetric systems, weighing modules are replaced by volumetric spacers. Spacers can be easily replaced for volumetric to gravimetric upgrade.



- Control box can be located in various locations on sides of feeder.
- Flexible connector between stationary hopper and feed tray.
- Overall height of feeder can be increased using optional stand risers. Riser height ranges are as follows and can be adjusted in one inch (25mm) increments: 13" to 18" shown (330mm to 457mm)
18" to 30" (457mm to 762mm)
30" to 42" (762mm to 1067mm)

2000 Series Dimensions with Stands											
	6" 1 cu/ft hopper	6" 2.5 cu/ft hopper	12" 5 cu/ft hopper	12" 10 cu/ft hopper	12" 20 cu/ft hopper	18" 5 cu/ft hopper	18" 10 cu/ft hopper	18" 20 cu/ft hopper	24" 10 cu/ft hopper	24" 20 cu/ft hopper	24" 50 cu/ft hopper
A	22.00"	22.00"	38.50"	38.50"	38.50"	38.50"	38.50"	38.50"	38.50"	38.50"	38.50"
B	24.50"	24.50"	43.18"	43.18"	43.18"	43.18"	43.18"	43.18"	43.18"	43.18"	43.18"
C	Ø18.94	Ø26.65	Ø34.09	Ø39.50	Ø39.50	Ø34.09	Ø39.50	Ø39.50	Ø39.50	Ø47.00	Ø47.00
D	3.00"	3.00"	3.00"	3.00"	3.00"	3.00"	3.00"	3.00"	3.00"	3.00"	3.00"
E	40.30"	52.80"	72.08"	80.80"	92.30"	71.88"	80.91"	92.41"	72.88"	84.88"	116.88"
F	Ø6.38	Ø6.38	Ø12.00	Ø12.00	Ø12.00	Ø18.00	Ø18.00	Ø18.00	Ø24.00	Ø24.00	Ø24.00
G	Ø3.00	Ø3.00	Ø4.00	Ø4.00	Ø4.00	Ø6.00	Ø6.00	Ø6.00	Ø8.00	Ø8.00	Ø8.00
H	8.00"	8.00"	26.00"	26.00"	26.00"	26.00"	26.00"	26.00"	26.00"	26.00"	26.00"
I	13.49"	13.49"	21.80"	21.80"	21.80"	28.24"	28.24"	28.24"	27.08"	27.08"	27.08"
J	4.00"	4.00"	8.00"	8.00"	8.00"	12.00"	12.00"	12.00"	12.00"	12.00"	12.00"
K	9.00"	9.00"	18.00"	18.00"	18.00"	24.00"	24.00"	24.00"	36.00"	36.00"	36.00"



NOTES:

- Flexible connector between stationary hopper and feed tray.
- Mounting flange can be bolted or welded onto customer hopper or silo.
- 6" & 12" – vibratory drive: .17 hp (.13 kW). Drive is TENV, IP-66, and meets NEMA MG-1.
18" & 24" – vibratory drive: .52 hp (.39 kW). Drive is TENV, IP-66, and meets NEMA MG-1.

2000 Series Dimensions with Top Plate				
	6"	12"	18"	24"
A	9.93"	13.12"	18.16"	21.16"
B	5.56"	9.84"	12.88"	15.88"
C	Ø10.50	Ø17.00	Ø24.00	Ø30.00
D	9.01"	15.99"	19.02"	22.14"
E	Ø6.38	Ø12.00	Ø18.00	Ø24.00
F	Ø3.00	Ø4.00	Ø6.00	Ø8.00
G	2.99"	4.24"	4.22"	5.22"
H	4.00"	8.00"	12.00"	16.00"

Reference drawings only. Dimensions subject to change without notice. Please contact sales for detailed drawings.

SF MODEL 2000 FEEDER

SIMPLY DESIGNED FOR THE BEST ACCURACY & RELIABILITY

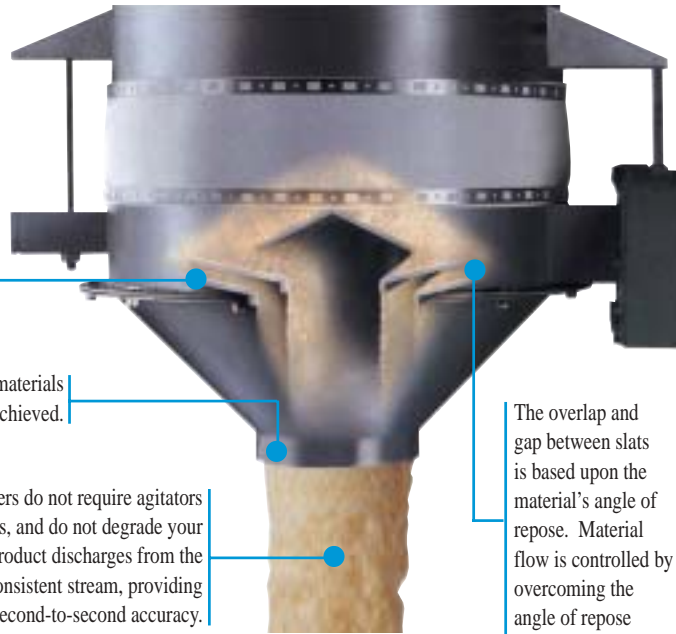
Measuring arching dimensions, wall friction angles and other flow properties ensures mass flow from the hopper. The feeder discharges material from the entire cross-section of the outlet.

Internal slats are engineered and positioned at angles related to the material's angle of slide, enabling the feeder to operate by gravity flow.

Feed trays are designed for the range of materials to be handled and flow rates to be achieved.

SolidsFlow® feeders do not require agitators or screws, and do not degrade your materials. Product discharges from the feeder in a consistent stream, providing excellent second-to-second accuracy.

The overlap and gap between slats is based upon the material's angle of repose. Material flow is controlled by overcoming the angle of repose through vibration.



SOLIDSFLOW® FEED TRAY DESIGN

The SolidsFlow® product line consists of a wide variety of feed tray options to meet your specific processing needs. Single slotted trays are offered for applications that require lower feed rates and multiple slotted trays are available

when feeding at higher rates is necessary. Testing of your material by our test lab will allow us to locate the most suitable feed tray for your application.

SPECIFICATIONS



SINGLE SLOT FEED TRAY



DUAL SLOTTED FEED TRAY



MULTIPLE SLOTTED FEED TRAY

SolidsFlow® Model 2000 Feeder Specifications

Feed Tray Sizes	Maximum Feed Rates	Feed Rates (liters)	Discharge Cone Diameter	Product Type
6" (152 mm)	22 cu. ft./hr.	623 liters	3" (76 mm)	Standard
12" (305 mm)	85 cu. ft./hr.	2,407 liters	4" (102 mm)	Standard
18" (457 mm)	168 cu. ft./hr.	4,758 liters	6" (152 mm)	Standard
24" (610 mm)	341 cu. ft./hr.	9,657 liters	8" (203 mm)	Standard
36" (914 mm)	767 cu. ft./hr.	21,721 liters	12" (305 mm)	Custom
48" (1,219 mm)	1,365 cu. ft./hr.	38,657 liters	16" (406 mm)	Custom
60" (1,524 mm)	2,130 cu. ft./hr.	60,322 liters	20" (508 mm)	Custom
72" (1,829 mm)	3,072 cu. ft./hr.	86,999 liters	24" (610 mm)	Custom