



schenckAccuRate



**SF Model 7600  
Box Dump/Feeder**

## **SolidsFlow® Model 7600 Box Dump/Feeder System**

The SolidsFlow® Model 7600 Box Dump/Feeder System was designed to functionally and economically replace the need for an expensive box dumper, skip-hoist, and refill hopper. The Model 7600 efficiently combines all the features of those products into one system.

By providing a complete package, customers can easily meter dry solid materials into their process. To begin the operation, the container (typically a gaylord box) is hoisted by a forklift and inserted into the box dumper. Next, automatic operation takes place by activating a dump pushbutton. This enables the doors to be closed (dust-tight containment) and the container to be rotated 180°; which ensures all material is discharged into the hopper.

The refill hopper provides capacity for two containers at one time, and a third can be placed in the invert position adding to the storage of the hopper. A signal automatically tells the operator when a new container is required via a low-level probe. The dump/storage is integrated with a refill feeder that automatically fills a loss-in-weight feeder, which accurately meters the proper amount of material into the process.

Not only do users of the Model 7600 get the economic benefits of an integrated system, but it is also the perfect solution to the messy handling problems associated with the combination of a box dumper, skip-hoist, storage hopper with refill feeder, conveying, and metering materials.

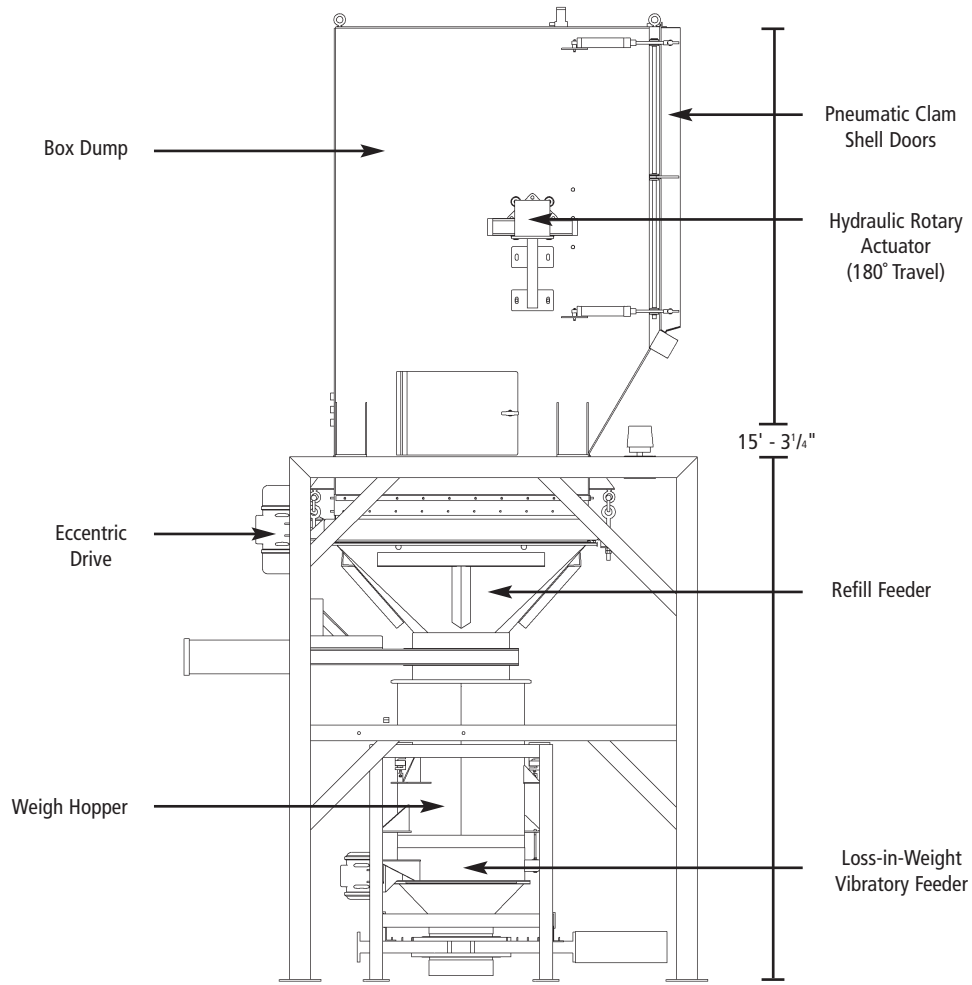
**For more information, please contact us at  
1-800-558-0184 or Fax: 262-473-4384  
E-mail: [mktg@accuratefeeders.com](mailto:mktg@accuratefeeders.com)  
Web site: [www.accuratefeeders.com](http://www.accuratefeeders.com)  
[www.schenckamericas.com](http://www.schenckamericas.com)**

**Specifications**

**SF Model 7600  
Box Dump/Feeder**

**Specifications**

**SolidsFlow® Model 7600 Box Dump/Feeder System**



*Note: Illustration is an example of a typical loss-in-weight feeding system utilizing a box dump refill unit. Please contact sales for detailed drawings.*